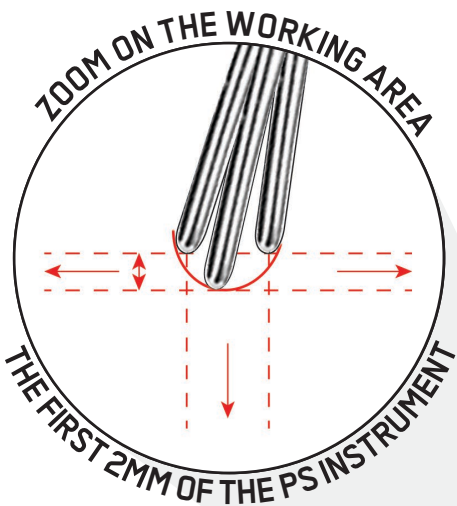


# PIEZON® PS

THE SWISS ORIGINAL  
A MASTERPIECE



**EMS**   
MAKE ME SMILE.

# ONE INSTRUMENT ONLY SCALING MADE EASY

## THE PIEZON® PS (PERIO SLIM) NO PAIN INSTRUMENT WILL WORK IN 95% OF ALL SITUATIONS

- With a wide range of applications - scaling, periodontal debridement and restorative - this instrument, made in Switzerland, is the market leader for prevention & prophylaxis. Whilst others brands suggest 20-ish instruments for a full mouth debridement, EMS has developed the original PIEZON® PS Instrument, that does it all.
- Designed to be as slim and as smooth as a periodontal probe, the original PIEZON® PS NO PAIN Instrument is gum-friendly, minimally invasive, maximally preventive, and preserves the epithelium thanks to its perfectly linear movements.
- By using only one instrument to remove 95% of calculus, clinical work will be easier. NO PAIN treatments are only guaranteed with the PIEZON® PS NO PAIN Instrument, the EMS PIEZON® NO PAIN system and proper training.
- Our Swiss Dental Academy will help you improve your skills and our PIEZON® PS Training Tool will help you to be a master.



- The PIEZON® PS NO PAIN Instrument can be used sub- and supragingivally, in all quadrants, up to 10mm. The constant efficiency is guaranteed during all its lifetime: +1000 treatments. Its cleaning efficiency and extreme comfort to patients are also scientifically proven.



**PLEASE ACCESS THE 15  
CLINICAL CLAIMS ON  
PIEZON® PS INSTRUMENT**

# HARMONY IN PERFECTION

- The original PIEZON® NO PAIN system, includes the PIEZON® PS NO PAIN Instrument, the high-tech PIEZON® NO PAIN Handpiece and the modern NO PAIN electronic module.
- The PIEZON® system was originally invented by Pierre Mabille, Co-founder of EMS, in 1981, in the Vallée-de-Joux, Switzerland, the watch-making capital of Switzerland. It was made in co-operation with Jaeger-LeCoultre (the only watches that never stop), as well as suppliers of the most exclusive watch-making industry in the world.
- Since then, PIEZON® has constantly been improved to guarantee best treatment comfort and efficiency. It uses piezoceramics to convert the smart electronic signal of the NO PAIN module into a mechanical vibrational motion which activates the PIEZON® PS NO PAIN Instrument in a perfectly linear motion.



PIEZON PS NO PAIN + hightech PIEZON Handpiece + Modern  
NO PAIN electric software = THIS IS HARMONY

- Only original EMS PIEZON® Instruments and handpieces ensure that the PIEZON® power is used to its full extent, that the tooth anatomy is respected and a comfortable treatment is delivered to the patients.



**PLEASE WATCH THE VIDEO  
OF PIEZON® PS NO PAIN  
LINEAR MOVEMENT**



# SOLUTIONS FOR MORE SITUATIONS



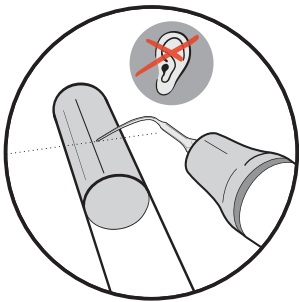
FOR SPECIAL SITUATIONS LIKE HARD CALCULUS OR INTERPROXIMAL AREAS, EMS HAS DEVELOPED DEDICATED AND EFFICIENT INSTRUMENTS.



- The PIEZON® P Instrument is mainly used for the removal of stubborn, hard sub- and supragingival calculus and concretions in all quadrants, up to 4 mm only.
- The PIEZON® PSR and PSL Instruments are recommended for difficult-to-reach distal and mesial interproximal surfaces with superior efficacy and comfort, subgingival and supragingival, up to 8 mm. The PIEZON® PSR & PSL Instruments feature superior efficacy in heavy calculus removal compared to the PIEZON® PS NO PAIN Instrument. They save time, especially during initial periodontal therapy and are indicated for adult patients only.
- The PIEZON® PI Instrument features a tip-coating made of high-tech Polyether Ether Ketone (PEEK) fiber that safely cleans the sensitive surfaces of implant abutments and restorations. It easily debrides plaque with surgical precision thanks to its linear oscillation and medical-grade stainless steel. It's ideal for minimally-invasive implant maintenance, for maximum patient comfort.

# TO BE A MASTER YOU NEED TO PRACTISE

- Practise your skills with the PIEZON® PS Training tool! Even when one is equipped with the best technology in the market, nothing beats proper training and the application of recommended treatment methods in order to achieve the PIEZON® NO PAIN effect.
- Always use the PIEZON® PS Instrument on the side of the tooth with the first millimeter of the instrument to ensure the NO PAIN treatment.



- Proper settings, angulation, adaptation, adequate pressure and movement are key to deliver efficient, minimally invasive and comfortable treatments.
- Correct angulation and positioning of the PIEZON® PS NO PAIN Instrument during treatment should not produce any sound.
- EMS has developed a dedicated training tool to help clinicians maximize success with their patients.

## CORRECT SEQUENCE OF USAGE:

1. **ADAPTATION** – Hold the Original PIEZON® PS NO PAIN Instrument parallel to the tube adapting the lateral side.
2. **ANGULATION** – Angulate the instrument with a slight tangent (5° - 30°). Only the last 1-2 mm should be in contact with the artificial calculus.
3. **PRESSURE** – Let the instrument work effortlessly, apply no pressure.
4. **MOVEMENT** – Make small back and forth strokes along the tube. Feel the linear movement.

WATCH THE  
VIDEO TO  
LEARN ABOUT  
THE OPTIMUM  
USE OF THE  
PIEZON® PS  
INSTRUMENT



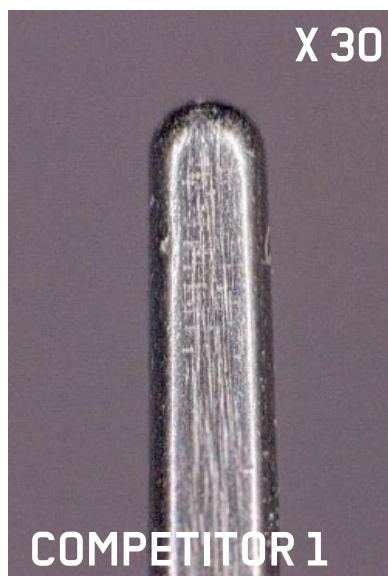
# ONLY USE THE ORIGINAL NEVER USE A COPY

## EVEN SO CALL « COMPATIBLES » ARE COPIES !

Cheap copies, which claim to be “compatible” with EMS PIEZON® systems, have long since found their way into every market and cause serious problems for patients and products.

"Compatible" copy tips cannot be compared to the original PIEZON® PS Instrument from EMS. They do not correspond to any EMS quality standards and do not match the precision of EMS Micrometric Swiss Manufacturing. The result is an instrument tip surface that does not come close to the original PIEZON® PS Instrument and a movement which is deteriorated. It's akin to scissors on a stick.

With the original PIEZON® PS instrument nothing rotates, nothing oscillates in circles, ellipses or creates figures of eight. This means nothing bends to one side affecting the tooth or the gum. Copy tips can NEVER match the original PIEZON® PS.

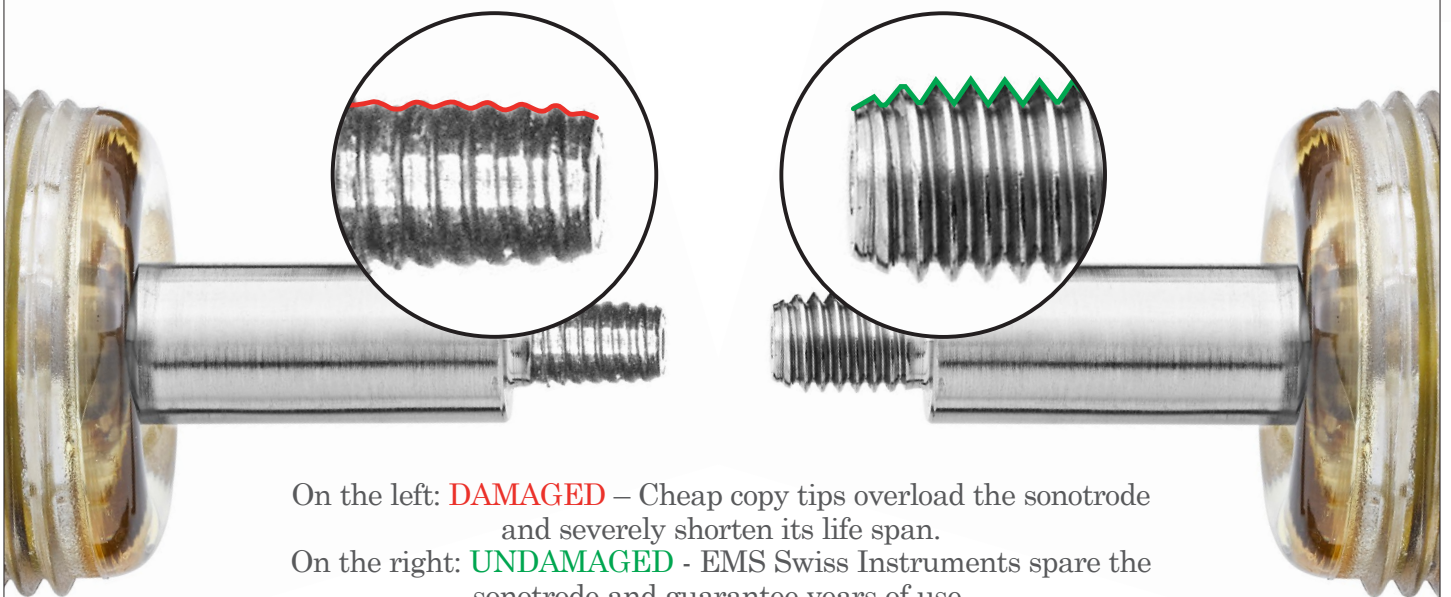


**THE PS INSTRUMENT'S SMOOTH SURFACE IS A KEY PARAMETER IN THE PIEZON® NO PAIN TRILOGY. A SIMILAR-LOOKING INSTRUMENT NEVER PRESENTS THE SAME SURFACE CONDITION.**

# A CHEAP COPY = VERY EXPENSIVE!



Protect your patients and your equipment. Rely only on the original PIEZON® PS NO PAIN Instruments and EMS original products. With so-called “compatible”, fake or copied tips, you risk ruining your patients’ teeth and gums and your premium EMS components. Only original EMS products are approved and warranted for use in EMS units to practise the revolutionary Guided Biofilm Therapy. Why buy worthless me-too copy tips, if one use of an original PIEZON® PS Instrument costs only 15-10 cents?



On the left: **DAMAGED** – Cheap copy tips overload the sonotrode and severely shorten its life span.

On the right: **UNDAMAGED** - EMS Swiss Instruments spare the sonotrode and guarantee years of use.

- Investing in Swiss quality pays off: While most copy tips can only perform 100 to 200 scaling treatments, the PS Instrument lasts more than 1000 treatments, thus reducing the treatment cost to a few cents per patient. How much is your patient worth to you?
- Even though copy tips can be bought at a relatively lower price, they cost the practitioner: time, efficiency, safety, treatment predictability and patient comfort.
- The sonotrode of the Original PIEZON® handpiece is made of premium titanium. Copies are made of inferior steel that has the same effect as a thread cutter and causes irreparable damage to your handpiece (loss of warranty!).
- Original EMS Swiss Instruments are the result of on-going development with the expertise of the inventor - the module, handpiece and instrument work in perfect harmony.

**A CHEAP COPY WILL BE VERY EXPENSIVE!**

# THE EMS PIEZON HISTORY

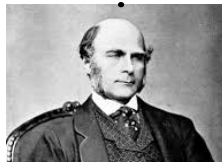


**1880**  
P&J Curie  
Piezo technology



**1916**  
P. Langevin  
Piezo transducer

**1883**  
F. Galton  
Ultrasonics



**1981**

P. Mabilie  
Invents 1st Piezo Scaler  
then co-founds EMS  
with B. Bühner



**1998**  
PS Instrument



**2006**  
**SDA**   
SWISS DENTAL ACADEMY

**2017**  
AIRFLOW®  
Prophylaxis Master



**2015**



**2007**





# RECOMMENDED USE



To ensure minimal invasiveness and minimize patient pain, the original EMS Instrument should be used with no force and with the right settings.

## RECOMMENDATIONS:

- Only use the lateral sides of the instrument.
- Only use the extremity of the instrument. The last 1 to 2 mm of the instrument is the most active part.
- Turn the instrument as you approach the interdental spaces to always keep in contact the lateral sides of the instrument.

Instr.	Case	Recommended Power	Recommended Water	Suggestions	
	Supragingival	30% - 60%		Start at low power and increase if need.	
	Subgingival → 10mm	30% - 60%			
	Children	30% - 60%			
	Orthodontics	30% - 60%	70% to 100%		Do not touch the bracket in order to avoid scratches and bond weakening.
	PSL PSR Supra- and subgingival Approximal areas → 8mm	10% - 60%			Caution: this instrument is angled (left or right) and is more powerful than PS. Start at low power and increase if needed.
	P Heavy calculus supragingival and subgingival → 4mm	30% - 60%		Start at low power and increase if needed.	

# CHECK YOUR PS INSTRUMENT

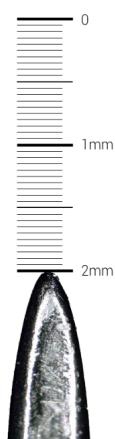


- ▶ Always control the wear of your PIEZON® PS NO PAIN instrument to ensure maximum comfort for your patients during treatment.
- ▶ Up to 2 mm of wear, the PIEZON® PS NO PAIN Instrument can ensure NO PAIN treatment and full comfort for your patient.
- ▶ Therefore, it is crucial to replace the instrument once the wear has reached 2 mm.

**NEW**



**USED**



**WARNING: AFTER 2 MM OF WEAR, DO NOT USE YOUR PIEZON® PS INSTRUMENT ANYMORE!**



# TEST YOUR KNOWLEDGE

SDA   
SWISS DENTAL ACADEMY

## WEBINARS ON-DEMAND

The Swiss Dental Academy webinars are available at any time, place and space that suits you.

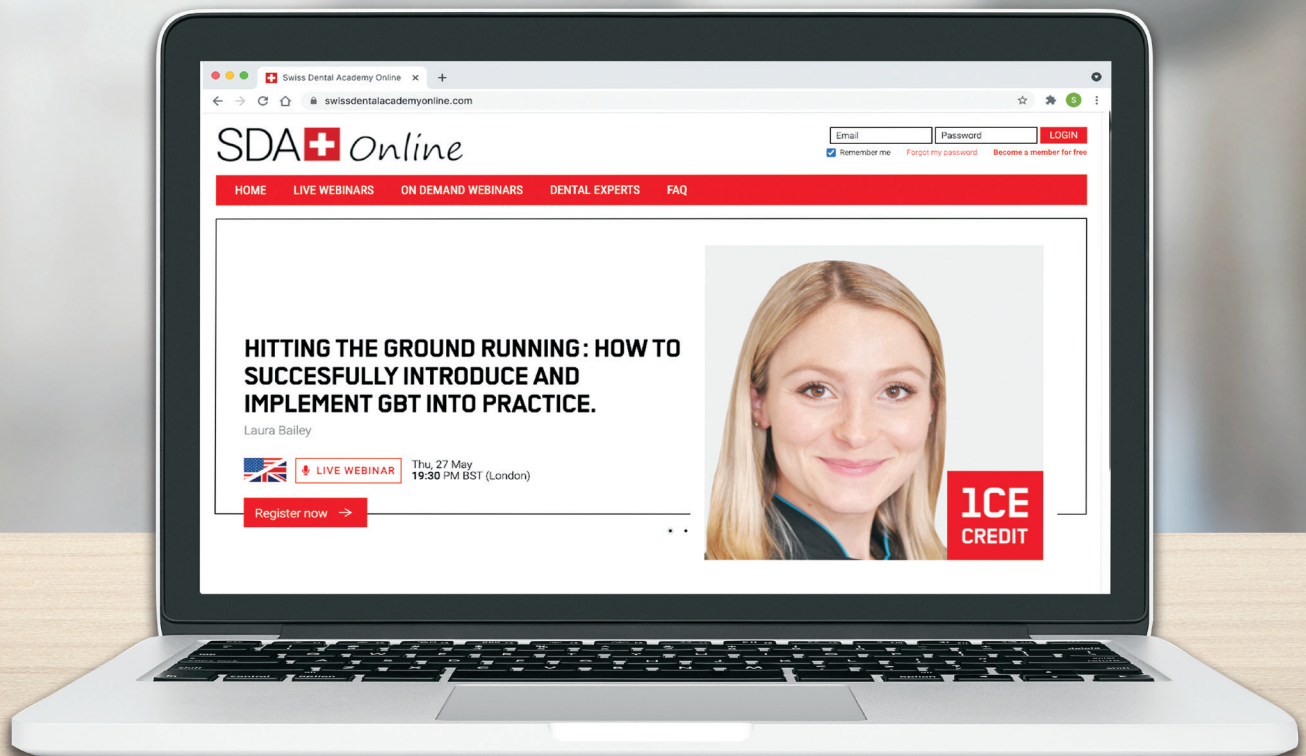
We're proud to offer you free CPD webinars across a range of topics:

- > PIEZON®
- > GBT & Profitability
- > Periodontics
- > Powder Technology
- > And much more!



**OCEANIA WEBINARS:** <https://emsdent.com/freewebinars>

**GLOBAL WEBINARS:** <https://www.swissdentalacademyonline.com/>



# THE BEST CLINICAL

► GUIDED BIOFILM THERAPY IS THE SYSTEMATIC, PREDICTABLE SOLUTION USING STATE OF THE ART AIRFLOW®, PERIOFLOW® AND PIEZON® TECHNOLOGIES

## 08 RECALL

HEALTHY PATIENT = HAPPY PATIENT

- Schedule recall frequency according to risk assessment
- Ask your patient if he or she liked the treatment

## 07 CHECK

MAKE YOUR PATIENT SMILE

- Do a final check for remaining biofilm
- Ensure calculus is fully removed
  - Accurately diagnose caries
  - Protect with fluoride
  - No polishing anymore

## 06 PIEZON® PS

REMOVE REMAINING CALCULUS

- Use the minimally invasive EMS PIEZON® PS Instrument supra- and subgingivally up to 10 mm
- Clean > 10 mm pockets with mini curette
- Use EMS PIEZON® PI Instrument around implants up to 3 mm subgingivally and on restorations

## 05 PERIOFLOW®

REMOVE BIOFILM IN >4 TO 9 MM POCKETS

- Use AIRFLOW® PLUS Powder on natural teeth in deep pockets and root furcations and on implants
- Use new and slimmer PERIOFLOW® Nozzle

► The PIEZON® technology is a cornerstone of this GBT Protocol. Clinicians who were initially used to the exclusive use of ultrasonic technology for the removal of biofilm and the conform delivered during the combination of both. The treatment is given in the least invasive way possible.

# PROTOCOL EVER

ON FOR ORAL BIOFILM MANAGEMENT IN PROFESSIONAL PROPHYLAXIS  
OLOGIES. IT IS PROVEN BY SCIENTIFIC EVIDENCE.

## 01 ASSESSMENT AND INFECTION CONTROL

ASSESS EVERY CLINICAL CASE AND  
IMPLEMENT HYGIENE MEASURES

- ▶ Start by rinsing with BacterX® Pro mouthwash
- ▶ Assess teeth, gingiva and periodontal tissues
- ▶ Assess implants and peri-implant tissues

## 02 DISCLOSE

MAKE BIOFILM VISIBLE

- ▶ Highlight to patients the disclosed biofilm and their problematic areas with EMS Biofilm Discloser
- ▶ The color will guide biofilm removal
- ▶ Once biofilm is removed, calculus is easier to detect

## 03 MOTIVATE

RAISE AWARENESS AND TEACH

- ▶ Emphasize prevention
- ▶ Instruct your patients in oral hygiene
- ▶ EMS recommends Philips Sonicare toothbrushes, interdental brushes and AirFloss Ultra

## 04 AIRFLOW® MAX

REMOVE BIOFILM, STAINS  
AND EARLY CALCULUS

- ▶ Use AIRFLOW® MAX for natural teeth, restorations and implants
- ▶ Remove biofilm supra- and subgingivally up to 4 mm using AIRFLOW® PLUS 14µm Powder
- ▶ Also remove biofilm from gingiva, tongue and palate
- ▶ Remove remaining stains on enamel using AIRFLOW® CLASSIC Comfort Powder

ensive use of hand instruments and discover GBT and EMS PIEZON® Technology are amazed by the results, the  
ve way, with the highest level of comfort, safety and efficiency.

# A GAME CHANGER FOR

“I’ve just had a routine scaling with my hygienist and I cannot believe how different it felt. When I have the treatment it’s usually quite sensitive on my bottom front teeth but today it was almost like she wasn’t touching them at all. I didn’t feel a thing!”

**HARRIS CHARLOTTE,  
PATIENT**

“With the EMS devices, we can motivate our patients in terms of prophylaxis. Through a pleasant feeling in the mouth – WELLNESS factor. Removal of stains – BEAUTY factor. 100% plaque removal – HEALTH factor.”

**MICHAELA GRUL**



# PATIENTS & CLINICIANS

“The devices of the company EMS helped us very much to simplify the procedure protocol of our “prophylaxis sessions”, to make it more gentle on substance and more patient-friendly (less pain). After more than 3 years, prophylaxis has become a technically and economically very important part of our dental practice thanks also to the scientific and technical competence (e.g. NO PAIN with PS tip, PLUS Powder) of EMS.”

**DR. NADINE STRAFELA-BASTENDORF,  
DENTIST**

“PIEZON® PS is really the most complete instrument for hard calculus removal. Its slim design allows for universal utilization supra and sub-gingivally in the least invasive way and with the highest comfort for the patient.”

**CELSO DA COSTA  
HEAD OF SDA & RDH – CH**

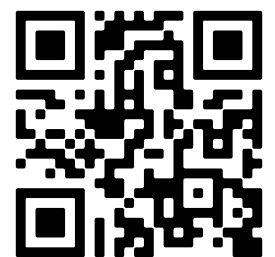
“The pressure required to remove deposit is very light which made scaling less strenuous resulting in less operator fatigue”

**FAYE DONALD  
RDH – UK**

“I’m so happy with GBT, I could not accept any other teeth cleaning method anymore. Due to GBT I see my dentist regularly and gladly for my prophylaxis. And each time I leave the office I’m happy with my clean and brilliant white smile! To me prophylaxis with GBT has become a great experience and I dearly recommend it!”

**SABINE PAVICIC, PATIENT**

**READ MORE  
TESTIMONIALS**





BOOK A FREE GBT  
DEMONSTRATION



**JOIN THE OCEANIA EMS COMMUNITY**

-  [facebook.com/emsAusNZ](https://facebook.com/emsAusNZ)
-  [instagram.com/airflow.dentalspa.anz/](https://instagram.com/airflow.dentalspa.anz/)
-  [youtube.com/emsdental](https://youtube.com/emsdental)
-  [www.facebook.com/groups/2041319372800158/](https://www.facebook.com/groups/2041319372800158/)  
(peer-run GBT Facebook User Group)

**E.M.S. Electro Medical Systems S.A.**

Ch. de la Vuarpillière 31  
1260 Nyon - Switzerland  
+41 22 99 44 700 - [ems-dental.com](https://ems-dental.com)

**EMS Oceania Pty Ltd**

Sydney Corporate Park – Unit 1/Building 4,  
160 Bourke Road, Alexandria 2015  
NSW – Australia  
+61(02) 9313 4392 -  
<https://www.airflowdentalspa.com.au>

Copyright: 2021 EMS.

**EMS**   
MAKE ME SMILE.